

**MMP1 Antibody (Center)**  
**Affinity Purified Rabbit Polyclonal Antibody (Pab)**  
**Catalog # AP11874c**

**Specification**

---

**MMP1 Antibody (Center) - Product Information**

Application	IF, IHC-P, WB,E
Primary Accession	<a href="#">P03956</a>
Other Accession	<a href="#">NP_002412</a>
Reactivity	Human
Host	Rabbit
Clonality	Polyclonal
Isotype	Rabbit IgG
Antigen Region	317-347

**MMP1 Antibody (Center) - Additional Information**

**Gene ID** 4312

**Other Names**

Interstitial collagenase, Fibroblast collagenase, Matrix metalloproteinase-1, MMP-1, 22 kDa interstitial collagenase, 27 kDa interstitial collagenase, MMP1, CLG

**Target/Specificity**

This MMP1 antibody is generated from rabbits immunized with a KLH conjugated synthetic peptide between 317-347 amino acids from the Central region of human MMP1.

**Dilution**

IF~~1:10~50  
IHC-P~~1:50~100  
WB~~1:1000  
E~~Use at an assay dependent concentration.

**Format**

Purified polyclonal antibody supplied in PBS with 0.09% (W/V) sodium azide. This antibody is purified through a protein A column, followed by peptide affinity purification.

**Storage**

Maintain refrigerated at 2-8°C for up to 2 weeks. For long term storage store at -20°C in small aliquots to prevent freeze-thaw cycles.

**Precautions**

MMP1 Antibody (Center) is for research use only and not for use in diagnostic or therapeutic procedures.

**MMP1 Antibody (Center) - Protein Information**

**Name** MMP1

## Synonyms CLG

**Function** Cleaves collagens of types I, II, and III at one site in the helical domain. Also cleaves collagens of types VII and X (PubMed:[1645757](#), PubMed:[2153297](#), PubMed:[2557822](#)). In case of HIV infection, interacts and cleaves the secreted viral Tat protein, leading to a decrease in neuronal Tat's mediated neurotoxicity (PubMed:[16807369](#)).

## Cellular Location

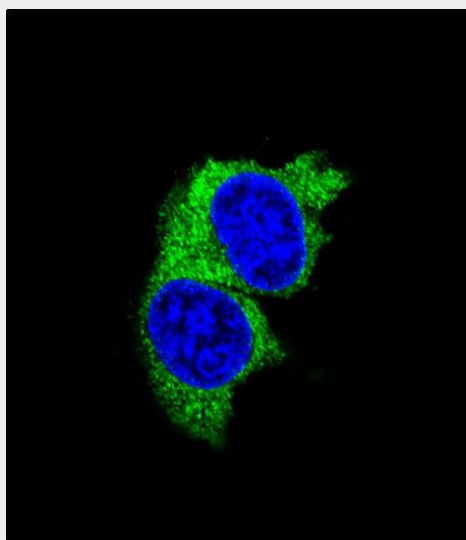
Secreted, extracellular space, extracellular matrix

## MMP1 Antibody (Center) - Protocols

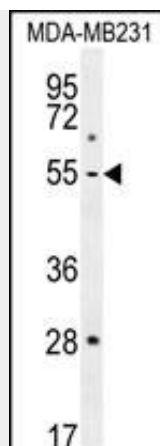
Provided below are standard protocols that you may find useful for product applications.

- [Western Blot](#)
- [Blocking Peptides](#)
- [Dot Blot](#)
- [Immunohistochemistry](#)
- [Immunofluorescence](#)
- [Immunoprecipitation](#)
- [Flow Cytometry](#)
- [Cell Culture](#)

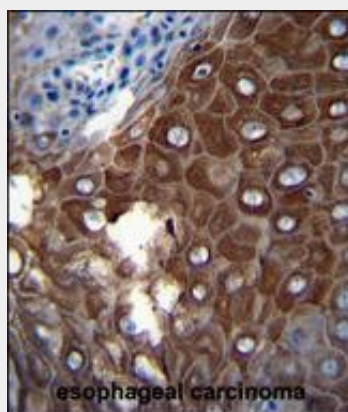
## MMP1 Antibody (Center) - Images



Confocal immunofluorescent analysis of MMP1 Antibody (Center) (Cat#AP11874c) with MDA-MB231 cell followed by Alexa Fluor 488-conjugated goat anti-rabbit IgG (green). DAPI was used to stain the cell nuclear (blue).



MMP1 Antibody (Center) (Cat. #AP11874c) western blot analysis in MDA-MB231 cell line lysates (35ug/lane). This demonstrates the MMP1 antibody detected the MMP1 protein (arrow).



MMP1 Antibody (Center) (Cat. #AP11874c) immunohistochemistry analysis in formalin fixed and paraffin embedded human esophageal carcinoma followed by peroxidase conjugation of the secondary antibody and DAB staining. This data demonstrates the use of MMP1 Antibody (Center) for immunohistochemistry. Clinical relevance has not been evaluated.

### **MMP1 Antibody (Center) - Background**

Proteins of the matrix metalloproteinase (MMP) family are involved in the breakdown of extracellular matrix in normal physiological processes, such as embryonic development, reproduction, and tissue remodeling, as well as in disease processes, such as arthritis and metastasis. Most MMP's are secreted as inactive proproteins which are activated when cleaved by extracellular proteinases. This gene encodes a secreted enzyme which breaks down the interstitial collagens, types I, II, and III. The gene is part of a cluster of MMP genes which localize to chromosome 11q22.3. Alternative splicing results in multiple transcript variants.

### **MMP1 Antibody (Center) - References**

Beshir, A.B., et al. Cancer Lett. 299(2):137-149(2010)  
Romero, R., et al. Am. J. Obstet. Gynecol. 203 (4), 361 (2010) :  
Malik, N., et al. J. Neurooncol. (2010) In press :  
Skorupski, P., et al. Ginek. Pol. 81(8):594-599(2010)  
Mossbock, G., et al. Mol. Vis. 16, 1764-1770 (2010) :